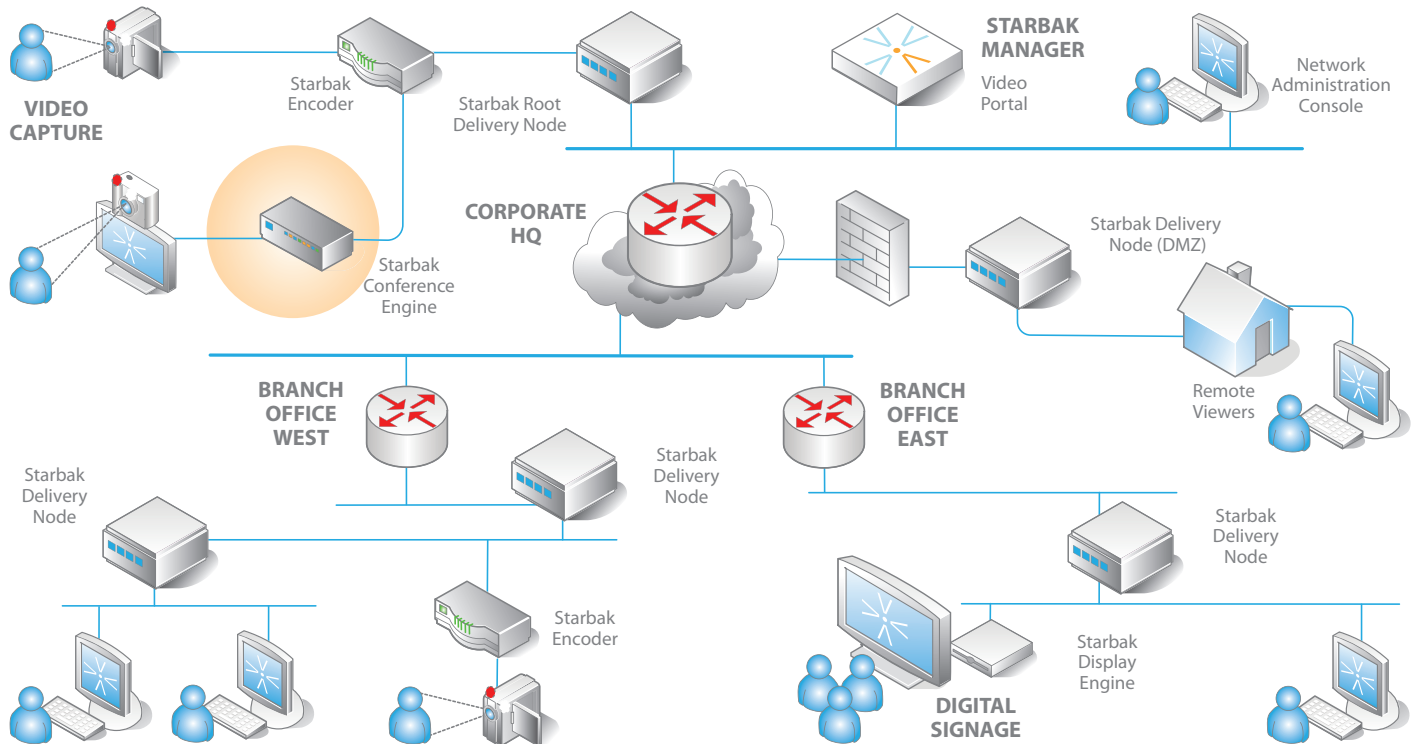


The patented Starbak Conference Engine is an optional device to the V3 system that allows basic video webcasting to be augmented with the addition of synchronized Powerpoint slides or other desktop applications.



The Starbak Conference Engine, when used in conjunction with the Starbak Encoder, can capture a native H.323 feed as a video source from any standard IP-based videoconferencing endpoint, and convert it to Microsoft Windows Media for live and on-demand streaming. This unique capability allows organizations to transform their videoconferencing meeting rooms into instant video webcasting and on-demand video publishing studios.

The Starbak Conference Engine is fully integrated into the Starbak V3 system, and accessible through the V3 portal. The Conference Engine is available as a rack-mounted device for data center environments, or as a small, limited stream office appliance for placement in a conference room. The Starbak Conference Engine can be set to automatically initiate or answer a video call through the endpoint, to begin the video webcast process.

> TECHNICAL SPECIFICATIONS CONFERENCE ENGINE

	RACK CONFIGURATION	BRANCH OFFICE CONFIGURATION
CPU	3.4 GHz Pentium 4	2.4 GHz Pentium 4
RAM	1 GB	512 MB
STORAGE	250 GB	80 GB
LAN	RJ45 Gigabit Ethernet	RJ45 10/100 Ethernet
PORTS	PS/2, USB, DB-9	PS/2, USB, DB-9
VIDEO INPUTS	3 or 5 H.323 Ports, H.261, H.263, H.264, H.263+, H.239 dual stream, G.711 audio, 64 kbps to 1.5 Mbps	1 H.323 Port, H.261, H.263, H.264, H.263+, H.239 dual stream, G.711 audio, 64 kbps to 1.5 Mbps
FILE INPUTS	PPT	PPT
OUTPUTS	Windows Media 8 38 kbps to 252 kbps	Windows Media 7, 8, 9 38 kbps to 252 kbps
FORM FACTOR	1U Rack	Set Top Box
SIZE	16.93 in.(w) x 26.457 in. (d) x 2.7 in. (h) 430mm (w) x 672mm(d) x 43.25mm (h)	12.7 in. (w) x 10 in. (d) x 2.7 in. (h) 322.6mm (w) x 254mm (d) x 68.6mm (h)
WEIGHT	31 lbs / 14.1 kg	8 lbs / 36 kg
OPERATING ENVIRONMENT	32°F to 113°F 0°C to 45°C	41°F to 95°F 5°C to 35°C
OPERATING SYSTEM	Linux	Linux
NOISE	<55dB	<35dB
POWER	350W with PFC 100 VAC to 240 VAC @ 50Hz or 60Hz	External 120W 100 VAC to 240 VAC @ 50Hz or 60Hz
CERTIFICATIONS	FCC Class A, ICES-003 Class A, CISPR 22 Class A, EN55002 Class A, EN55025 Immunity, EN61000-3-2 & -3, CE-EMC/Low Voltage, VCCI Class A, AS/NZS 3548 Class A, RRL Class A, BSMI Class A, UL-1950, CSA-1950, EN 60 950, IEC60 950, EMKO-TSE (74-SEC), 207/94	FCC, UL, CE pending